



RESOLUTION NUMBER: 2021-27

Adjusting Precinct Boundaries

WHEREAS, pursuant to Subsection A of NMSA 1978, Section 1-3-5 (2019), it is the duty of the Board of County Commissioners by resolution to create, divide, abolish, combine or adjust the boundaries of any precinct as necessary to meet the requirements of the Election Code as well as the legal and constitutional requirements for redistricting; *and*

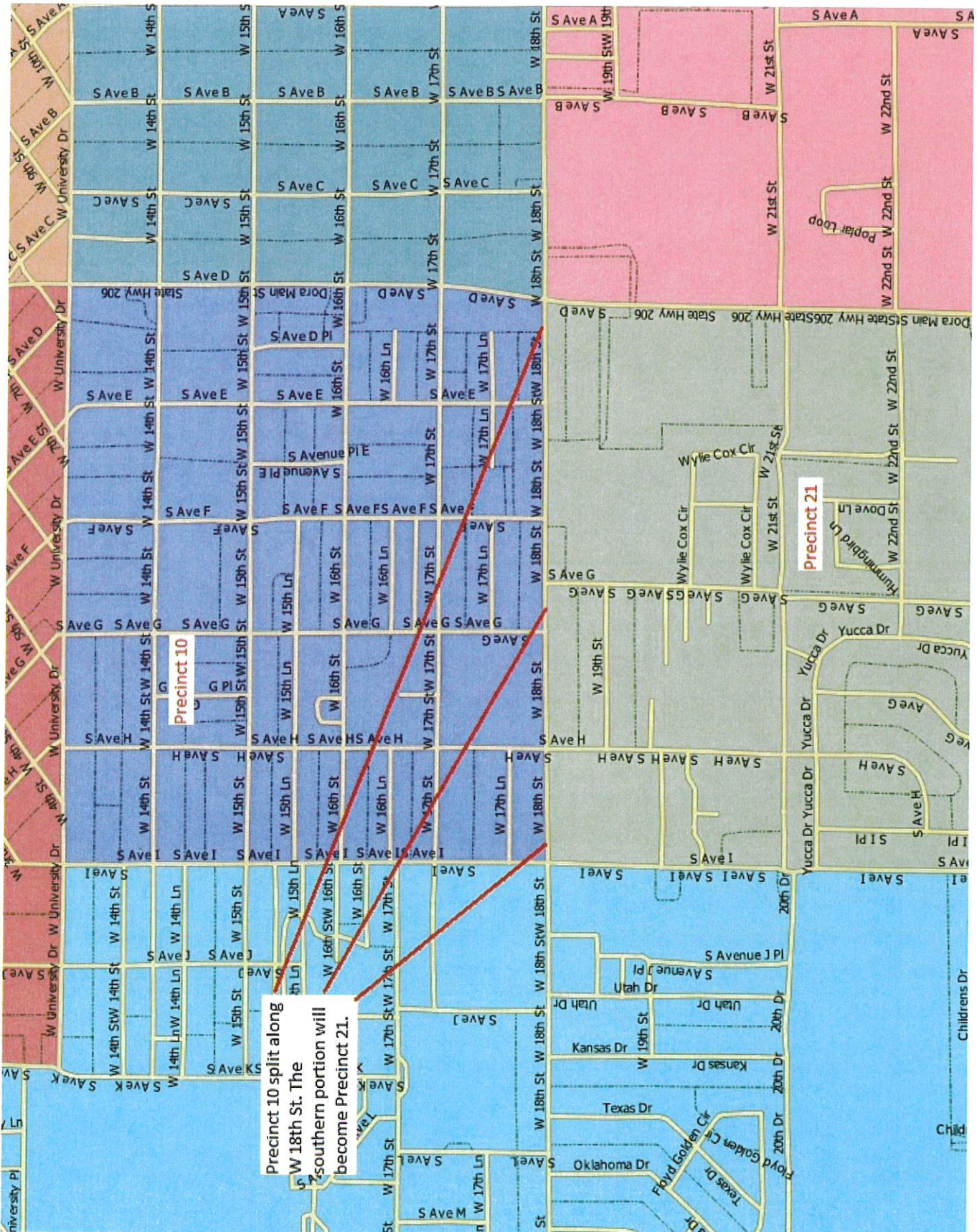
WHEREAS, it has been determined by the County Clerk that precinct boundaries should be created, divided, abolished, combined or otherwise adjusted as provided in the map attached to this Resolution; *and*

NOW, THEREFORE, BE IT RESOLVED by the Board of County Commissioners the precincts in the County shall conform to the adjustments and designations as shown on attached map and made part of this Resolution; *and*

NOW, THEREFORE, BE IT FURTHER RESOLVED by the Board of County Commissioners designates the County Board of Registration to serve as the County Canvassing Board for the county for any Statewide or Special Election conducted within the county in calendar years 2022 and 2023.

NOW, THEREFORE, BE IT FURTHER RESOLVED that pursuant to NMSA 1978, Section 1-3-8 (1975), upon adoption of this Resolution, the board of County Commissioners shall send a certified copy of this Resolution to the Secretary of State and the County Chair of each of the major political parties and shall publish once the resolution in a newspaper as provided in NMSA 1978, Section 1-1-14 (2011)/

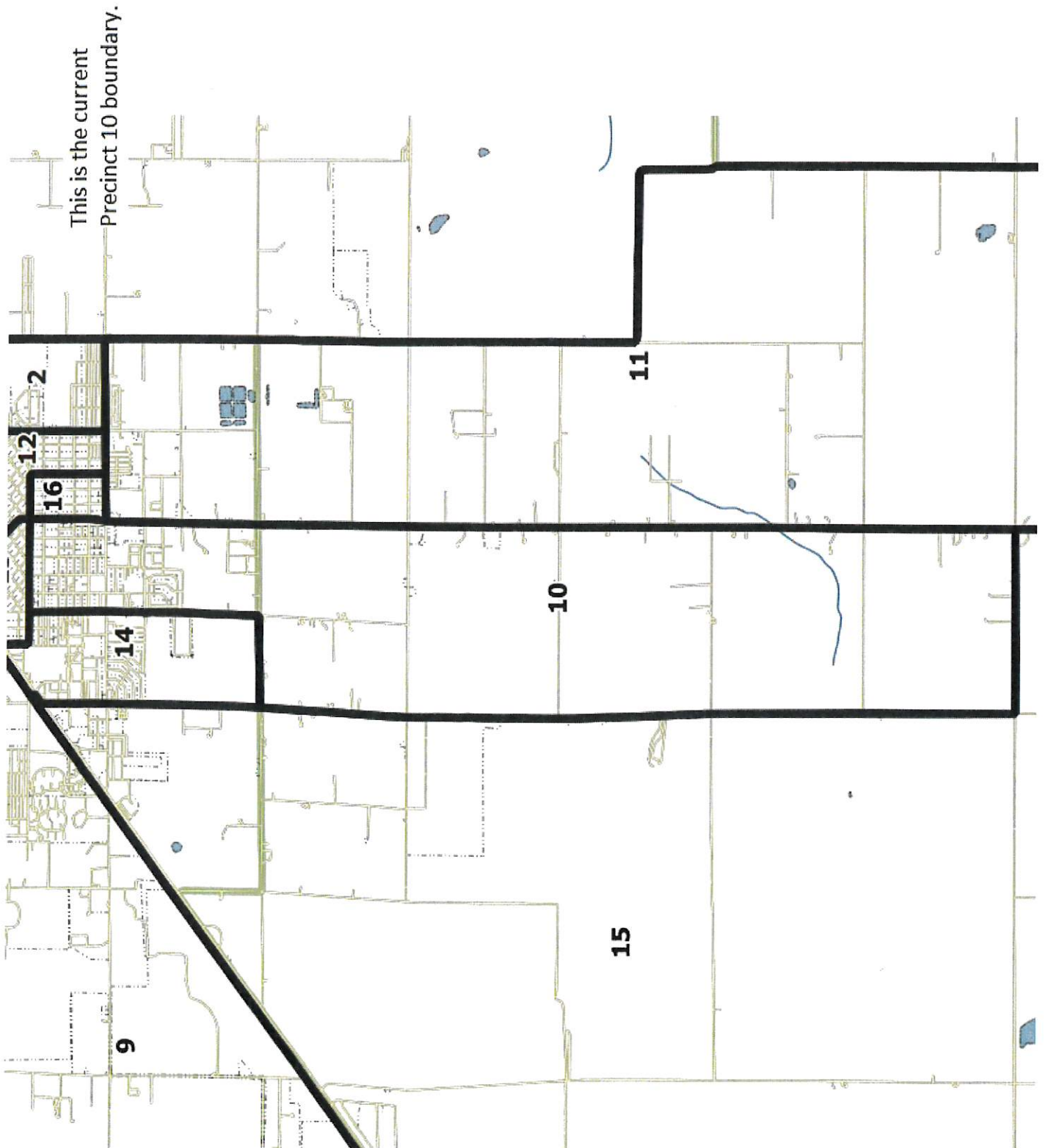
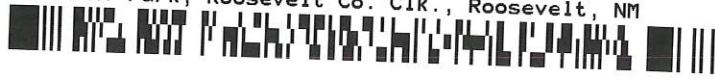




20211375 06/08/2021 11:32:36 AM

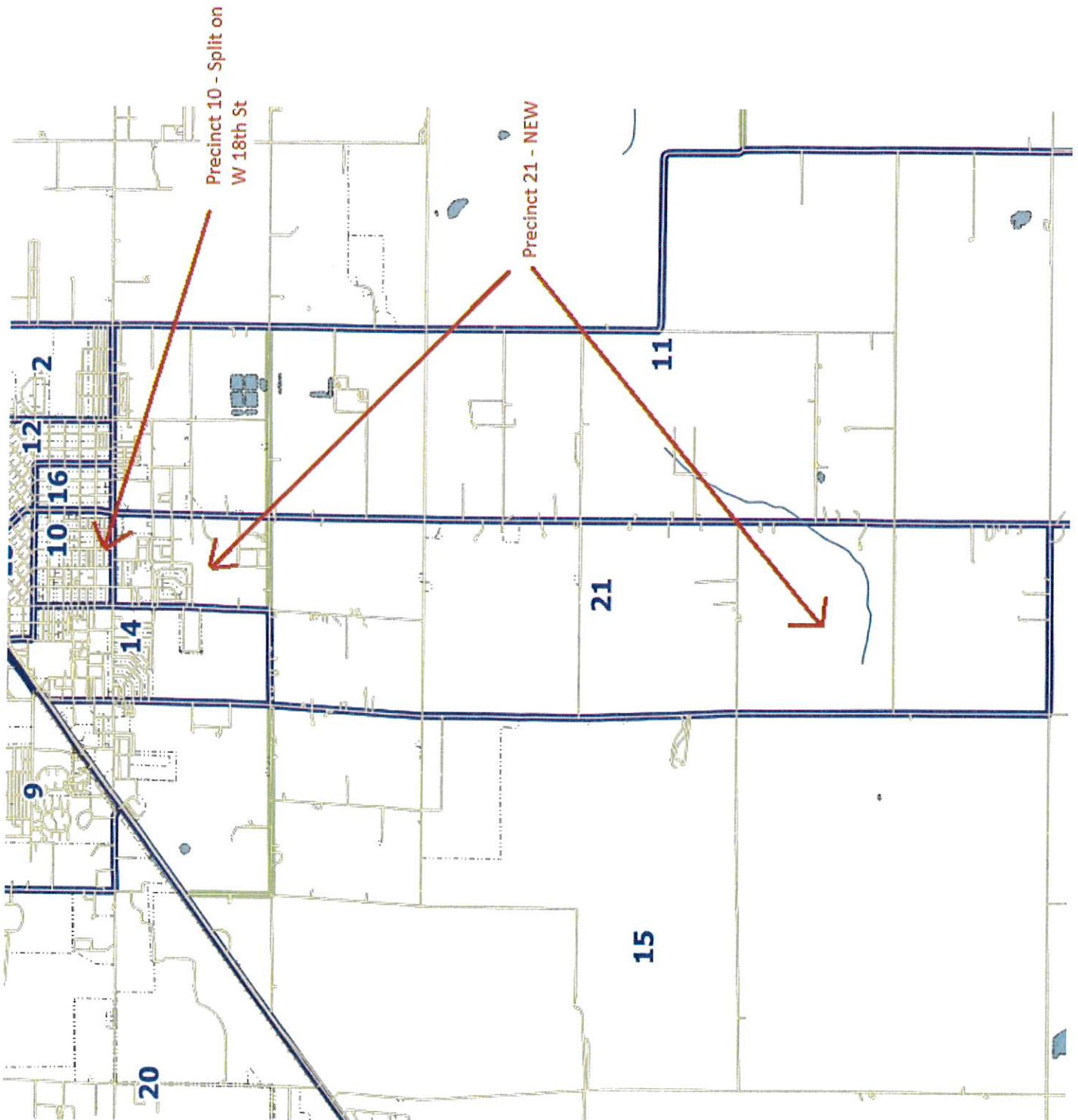
Page: 3 of 8 Fee: 0 RES

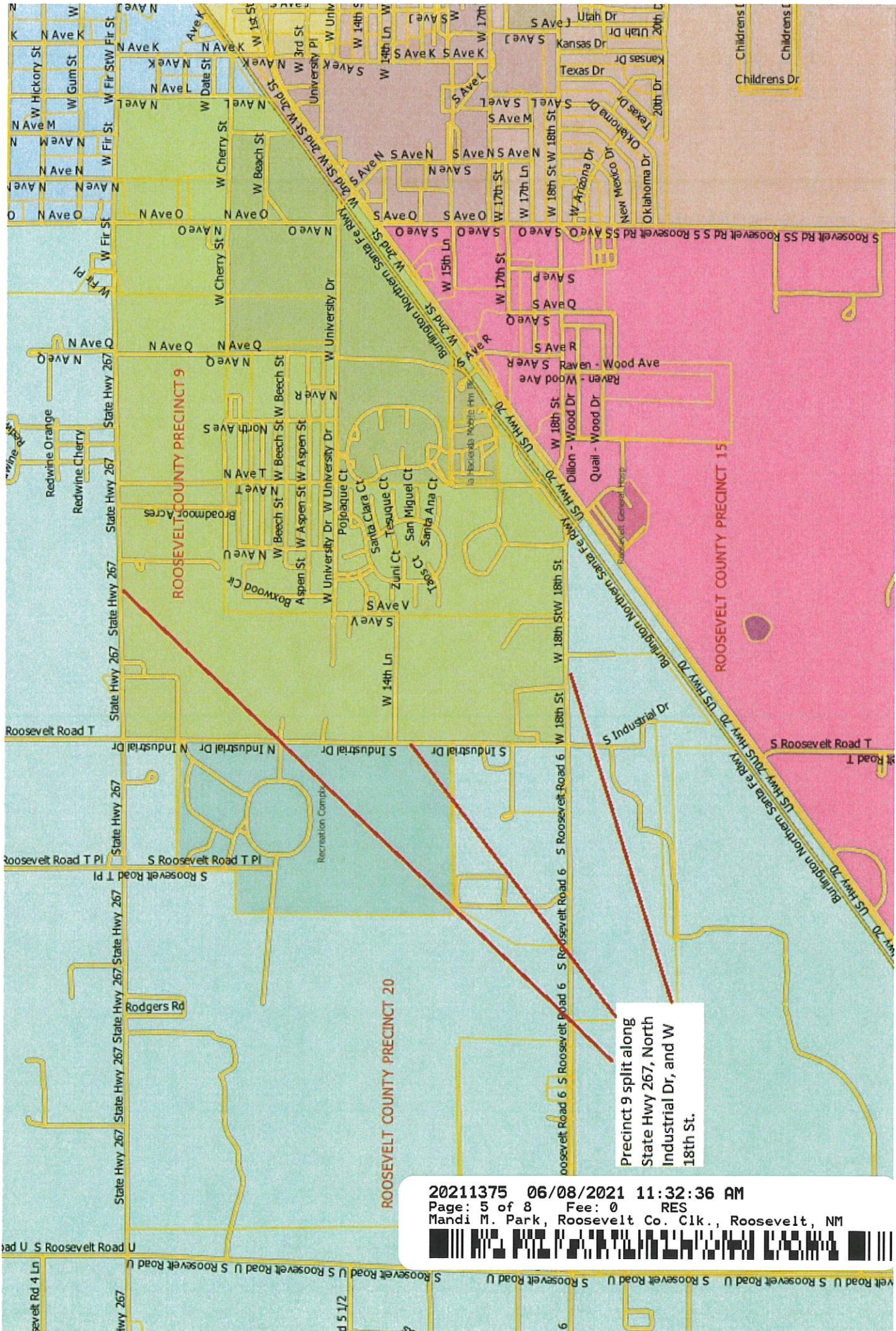
Mandi M. Park, Roosevelt Co. Clk., Roosevelt, NM



202111375 06/08/2021 11:32:36 AM
Page: 4 of 8 Fee: 0 RES
Mandi M. Park, Roosevelt Co. Clk., Roosevelt, NM

Page: 4 of 8 Fee: 0 RES
Mandi M. Park, Roosevelt Co. Clk., Roosevelt, NM



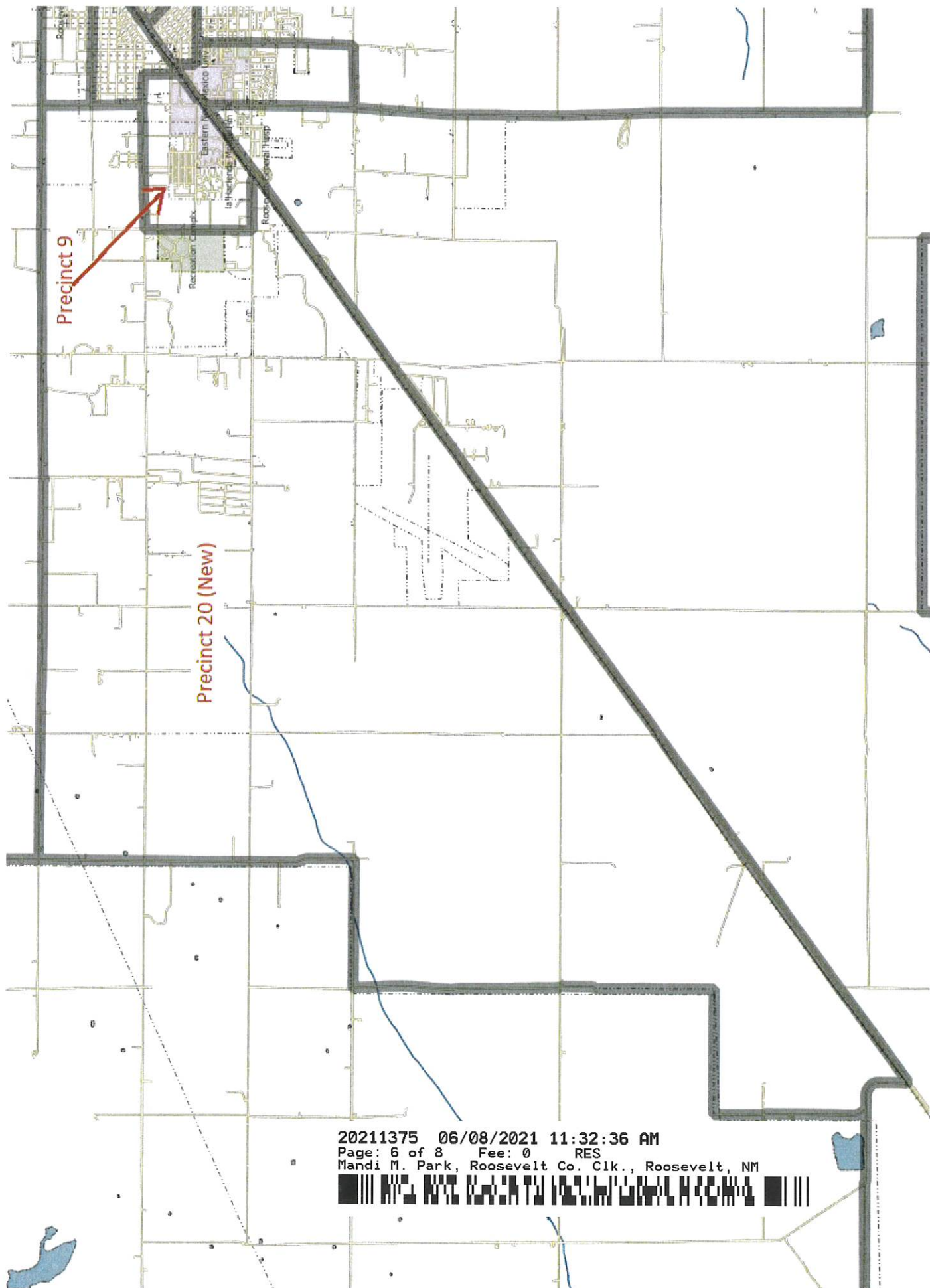


Precinct 9 split along
State Hwy 267, North
Industrial Dr, and W
18th St.

20211375 06/08/2021 11:32:36 AM

Page: 5 of 8 Fee: 0 RES
Mandi M. Park, Roosevelt Co. Clk., Roosevelt, NM





Precinct 9

Precinct 20 (New)

20211375 06/08/2021 11:32:36 AM

Page: 6 of 8 Fee: 0 RES
Mandi M. Park, Roosevelt Co. Clk., Roosevelt, NM



This is the current
Precinct 9 boundary.

Roosevelt County Precinct 6

Roosevelt County Precinct 9

Roosevelt County Precinct 15

Roosevelt County

Roosevelt County Precinct 8

Roosevelt County Precinct 13

Roosevelt County Precinct 10

Recreation Camps
Eastern M. Park
la Hacienda M. Park
Saco Liv



PASSED, APPROVED AND ADOPTED on this 8th day of June, 2021 by the Roosevelt County Board of Commissioners in an open meeting in Portales, New Mexico.

**BODY OF COUNTY COMMISSIONERS
ROOSEVELT COUNTY, NEW MEXICO**

ATTEST:

Mandi M. Park
Mandi Park, Roosevelt County Clerk



Tina Dixon

Tina Dixon, *Chair* – District IV

Voted: ☒ Yes ☐ No ☐ Abstained

absent

Lewis (Shane) Lee, *Vice Chair* – District III

Voted: ☐ Yes ☐ No ☐ Abstained

Dennis Lopez

Dennis Lopez – District I

Voted: ☒ Yes ☐ No ☐ Abstained

Rodney Savage

Rodney Savage – District II

Voted: ☐ Yes ☐ No ☐ Abstained

Paul Grider

Paul Grider – District V

Voted: ☒ Yes ☐ No ☐ Abstained



MP

20211375 06/08/2021 11:32:36 AM

Page: 8 of 8 Fee: 0 RES
Mandi M. Park, Roosevelt Co. Clk., Roosevelt, NM

