



RESOLUTION NUMBER: 2018-27

Declaring a Fire Danger Emergency in Roosevelt County

WHEREAS, Roosevelt County as with other counties in Eastern New Mexico and West Texas, has experienced a prolonged drought with very little moisture; and,

WHEREAS, Roosevelt County has determined, based upon current drought indices published by the U.S. Drought Monitor Report, lack of precipitation, low humidity, and abundance of wildland grass and dry, fine fuels that there is a serious likelihood of fire danger in Roosevelt County; and,

WHEREAS, on April 15, 2014, the Roosevelt County Board of County Commissioners adopted Ordinance 2014-03 which established provisions for declaring severe fire hazard restrictions and fire danger emergencies and authority to mitigate the same; and,

WHEREAS, Roosevelt County believes that because of the weather conditions, a fire danger emergency exists and provisions set forth in Ordinance 2014-03 need to be implemented.

NOW, THEREFORE, the County Commissioners of Roosevelt County, which is the governing body of Roosevelt County, pursuant to its powers under §4-37-1, et seq., to provide for safety, preserve the health, promote the prosperity and improve the moral, order and convenience of Roosevelt County and its inhabitants and finds it necessary to adopt this resolution.

IT IS HEREBY RESOLVED that from this day forward until otherwise modified or rescinded, that burning within the unincorporated areas of Roosevelt County is prohibited pursuant to the provisions contained within Ordinance 2014-03.

The County Commissioners must renew this resolution every forty-five (45) days. If this resolution is not renewed within the designated timeframe, then it is hereby automatically terminated. In addition, the Roosevelt County Commissioners may terminate and rescind this Resolution at any appropriate time.

Any person charged with a violation of Ordinance 2014-03 shall be cited into court and, shall be subjected to the violations and penalties set forth in Section 12 of Ordinance 2014-03.

Violations shall be enforced by any Roosevelt County Sheriff's Deputy, or any State certified law enforcement officer.

Any person who violates any provision of Ordinance 2014-03, or may be found guilty of a violation of Ordinance 2014-03, shall also be responsible and civilly liable for any costs, expenses or damages caused by any fire that may be created or started a result of said violation. In addition, said person shall also be responsible and be required to reimburse the County for the full cost of any and all labor or equipment use required to attend to or necessary to control, contain and/or suppress any fires caused thereby.



NOW THEREFORE BE IT RESOLVED, Resolution 2018-17 will be renewed for forty-five (45) days, which will commence June 26, 2018.

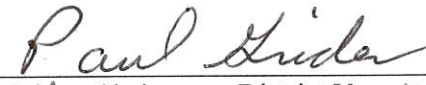
PASSED, APPROVED, and ADOPTED this 26th day of June, 2018.

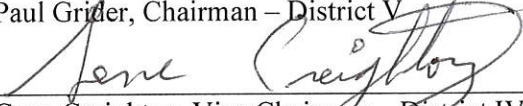
ATTEST:


DeAun D. Searl, Roosevelt County Clerk
Stephanie Hicks Chief Deputy Clerk

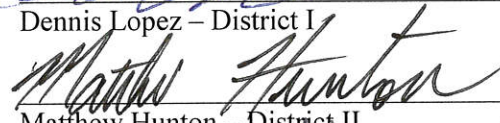



**BODY OF COUNTY COMMISSIONERS
ROOSEVELT COUNTY, NEW MEXICO**


Paul Grider, Chairman – District V


Gene Creighton, Vice Chairman – District IV


Dennis Lopez – District I


Matthew Hunton – District II


Lewis (Shane) Lee – District III



sdl



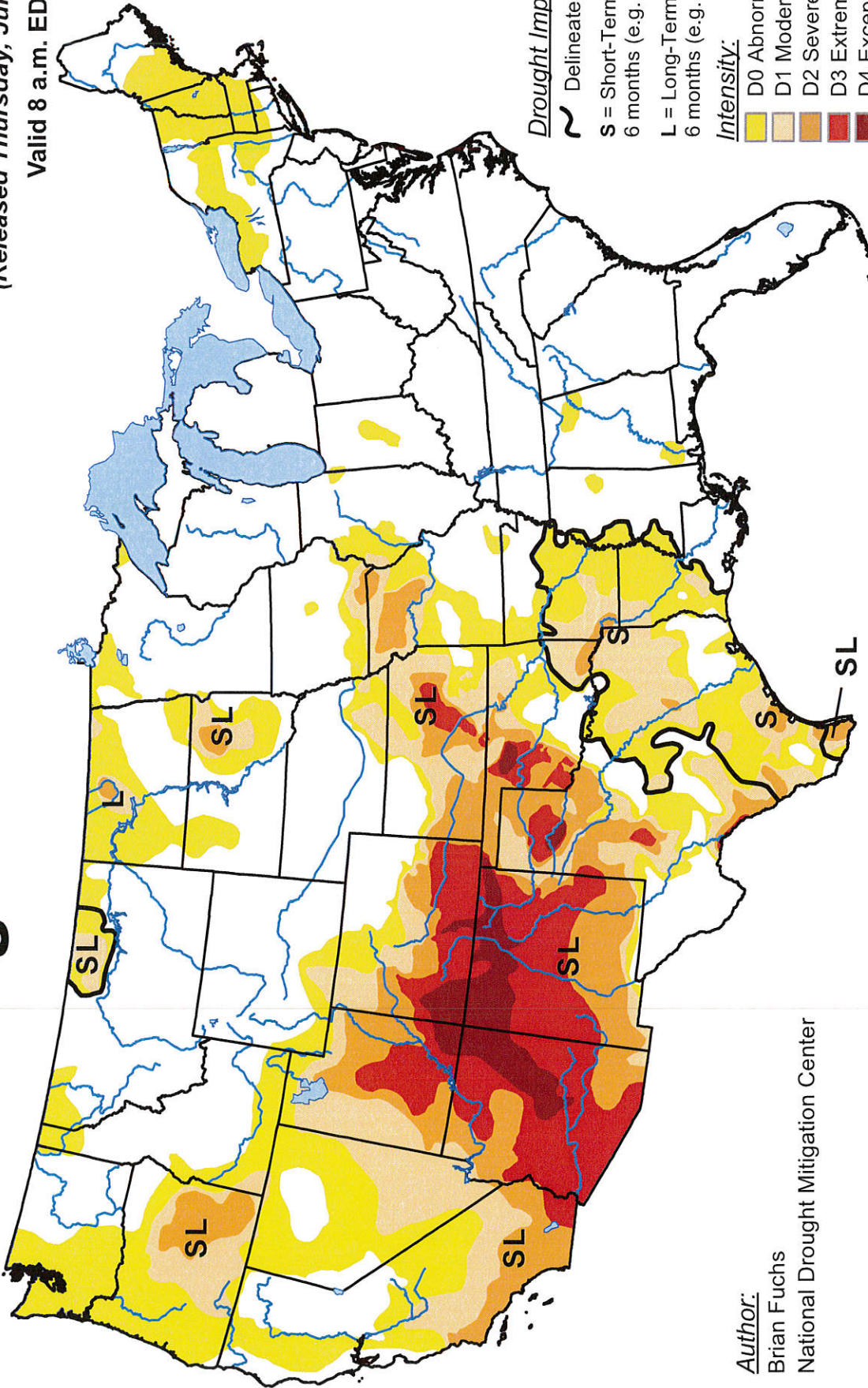
U.S. Drought Monitor

June 19, 2018

(Released Thursday, Jun. 21, 2018,

Valid 8 a.m. EDT

20181639 06/26/2018 03:52:50 PM
Page: 2 of 4 Fee: 0 RES
DeRun D Searl, Roosevelt Co. Ck., Roosevelt, NM



Author:

Brian Fuchs

National Drought Mitigation Center

Drought Impact Types:

~ Delineates dominant impacts

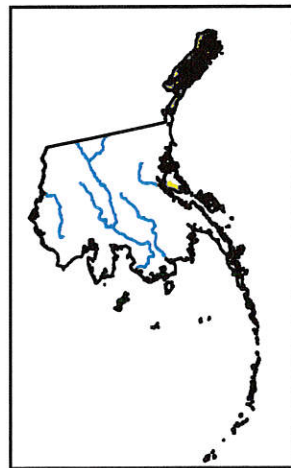
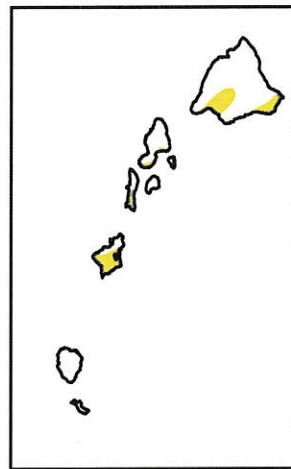
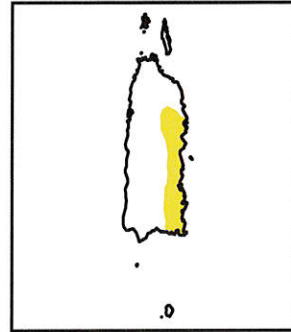
S = Short-Term, typically less than 6 months (e.g. agriculture, grasslands)

L = Long-Term, typically greater than 6 months (e.g. hydrology, ecology)

Intensity:

- D0 Abnormally Dry
- D1 Moderate Drought
- D2 Severe Drought
- D3 Extreme Drought
- D4 Exceptional Drought

The Drought Monitor focuses on broad-scale conditions. Local conditions may vary. See accompanying text summary for forecast statements.



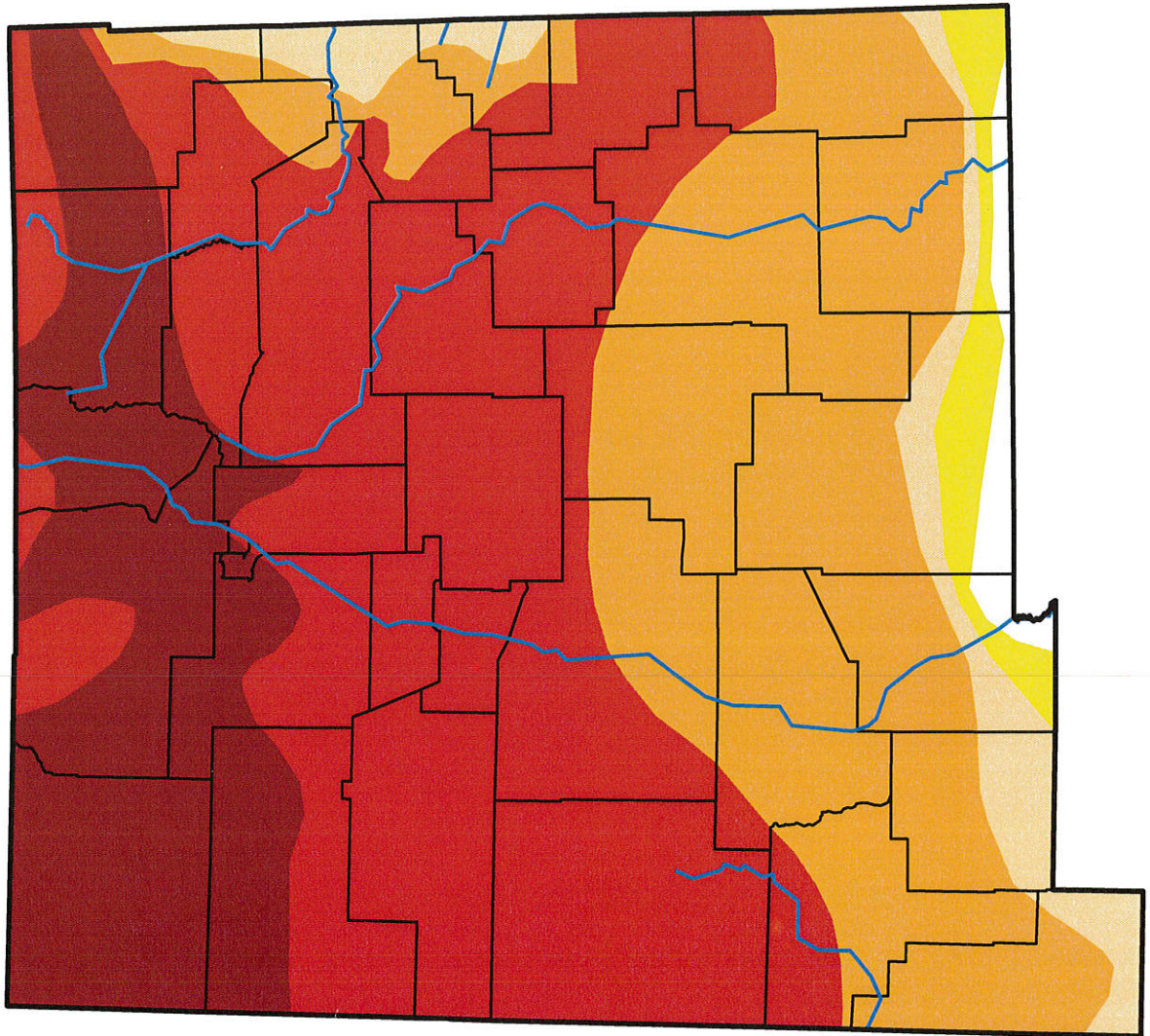
<http://droughtmonitor.unl.edu/>

U.S. Drought Monitor New Mexico

June 19, 2018

(Released Thursday, Jun. 21, 2018)

Valid 8 a.m. EDT



Drought Conditions (Percent Area)						
	None	D0-D4	D1-D4	D2-D4	D3-D4	D4
Current	1.36	98.64	96.30	91.26	60.89	18.02
Last Week 06-12-2018	0.10	99.90	98.65	92.39	62.97	18.17
3 Months Ago 03-20-2018	0.08	99.92	98.64	77.89	25.60	0.00
Start of Calendar Year 01-02-2018	7.01	92.99	45.97	4.76	0.00	0.00
Start of Water Year 09-26-2017	85.16	14.84	0.00	0.00	0.00	0.00
One Year Ago 06-20-2017	75.26	24.74	6.56	0.00	0.00	0.00

Intensity:



D0 Abnormally Dry



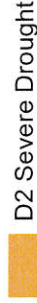
D3 Extreme Drought



D1 Moderate Drought



D4 Exceptional Drought



D2 Severe Drought

The Drought Monitor focuses on broad-scale conditions. Local conditions may vary. See accompanying text summary for forecast statements.

Author:

Brian Fuchs

National Drought Mitigation Center



<http://droughtmonitor.unl.edu/>

